



1074 Kenran Industrial Dr.
 St. Louis, MO 63137
 Phone: 1-800-381-9968

HUMCO FENDERING/BUMPERS

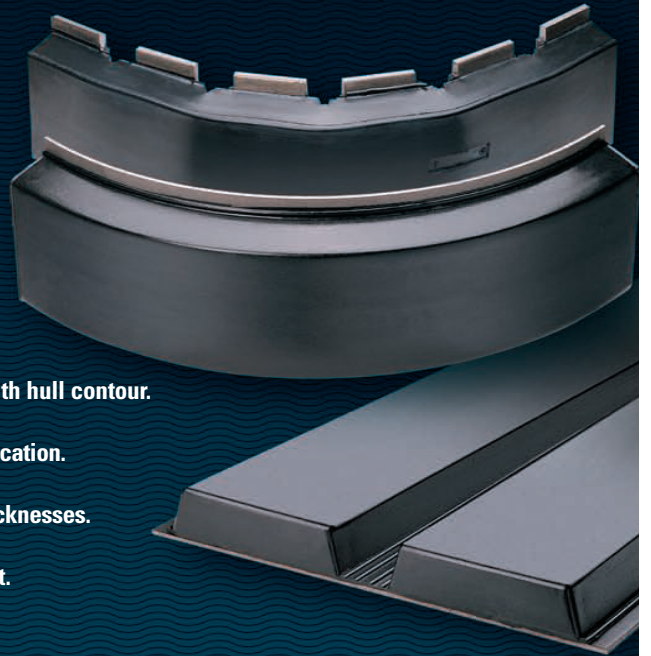
Duramax Tow Knee Pusher Plates

Duramax® Tow Knee Pusher Plates

Pushboats On Inland Waterways Trust Our Pusher Plates To Absorb The Abuse Of The Daily Grind.

Duramax® Tow Knees are among the most trusted impact absorbing pusher plates in the marine industry. They stand up to the test of time because we specialize in rubber to metal bonding - a process where tough rubber pads are securely vulcanized to steel or aluminum plates - and use only the highest quality materials.

- ▶ Duramax® segmented tow knees have built-in flexibility to conform with hull contour.
- ▶ Single, double or pre-curved models available options to suit every application.
- ▶ Steel or aluminum substrate plates are available in 1/4", 1/2" and 3/4" thicknesses.
- ▶ We stock a large inventory of tow knees ready for immediate shipment.





1074 Kenran Industrial Dr.
St. Louis, MO 63137
Phone: 1-800-381-9968

HUMCO FENDERING/BUMPERS

Duramax Tow Knee Pusher Plates

TOW KNEES (CONTINUED)

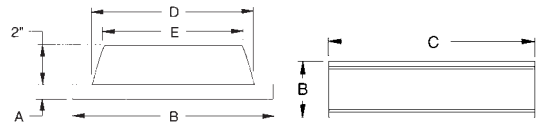
SINGLE TOW-KNEES

Duramax Tow-Knees have a tough resilient 2" rubber pad bonded to a steel or aluminum plate. A proprietary bonding method is used for superior rubber to metal bond. This improves the wear life of the Tow Knee in the most demanding marine environments.

Specify carbon steel or aluminum plate at time of order.



NOTE: It is recommended that Tow Knees be only stitch welded. This is to prevent excessive heat build-up during installation.



CODE NO.	DURAMAX® PART NO.	A THICKNESS	B WIDTH	C LENGTH	D BASE WIDTH	E SURFACE WIDTH	WEIGHT PER UNIT
DB-1408	802140806	3/4"	10"	36"	8"	7"	90 lbs.
DB-1409	802140906	1/2"	10"	36"	8"	7"	65 lbs.
DB-1410	802141006	1/4"	10"	36"	8"	7"	50 lbs.
DB-1508	802150806	3/4"	13-1/2"	36"	11-1/4"	10-1/4"	130 lbs.
DB-1509	802150906	1/2"	13-1/2"	36"	11-1/4"	10-1/4"	90 lbs.
DB-1510	802151006	1/4"	13-1/2"	36"	11-1/4"	10-1/4"	70 lbs.

*See page 806 for Tow Knees Reaction Load/Deflection Chart

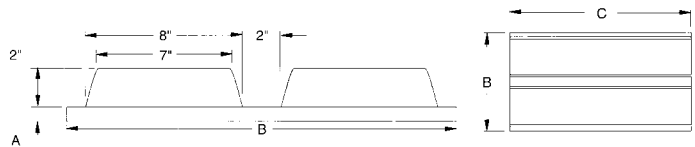
DOUBLE TOW-KNEES

Double-wide Tow Knee reduces labor and welding time during installation.

Specify carbon steel or aluminum plate at time of order.



NOTE: It is recommended that Tow Knees be only stitch welded. This is to prevent excessive heat build-up during installation.



CODE NO.	DURAMAX® PART NO.	A PLATE THICKNESS	B WIDTH	C LENGTH	WEIGHT PER UNIT
DB-1608	802160806	3/4"	20"	36"	190 lbs.
DB-1609	802160906	1/2"	20"	36"	135 lbs.
DB-1610	802161006	1/4"	20"	36"	85 lbs.



1074 Kenran Industrial Dr.
St. Louis, MO 63137
Phone: 1-800-381-9968

HUMCO FENDERING/BUMPERS

Duramax Tow Knee Pusher Plates

TOW KNEES *(CONTINUED)*

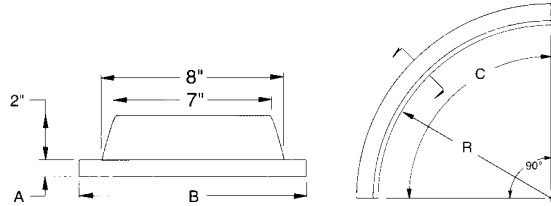
PRECURVED TOW-KNEES

For use in corner applications on vessels or dock structures.

Specify carbon steel or aluminum plate at time of order.

NOTE:

It is recommended that
Tow Knees be only stitch welded.
This is to prevent excessive heat
build-up during installation.



CODE NO.	DURAMAX® PART NO.	R RADIUS	A PLATE THICKNESS	B WIDTH	C LENGTH	WEIGHT PER UNIT
DB-1708	802170806	18"	3/4"	10"	28-1/4"	80 lbs.
DB-1709	802170906	18-1/4"	1/2"	10"	28-5/8"	60 lbs.
DB-1710	802171006	18-1/2"	1/4"	10"	29-1/16"	40 lbs.

*See page 806 for Tow Knees Reaction Load/Deflection Chart

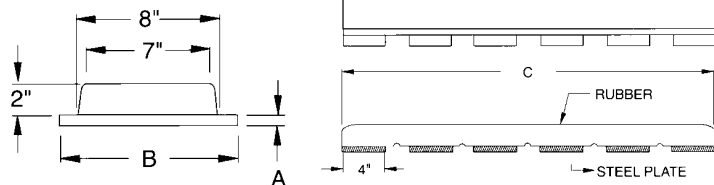
SEGMENTED TOW-KNEES

Segmented tow knees have 6 independent 4"x10" welding plates that permit bending the tow-knee on a radius. The rubber pad has molded grooves in between the plates to reduce part stress at bend locations.

Specify carbon steel or aluminum plate at time of order.

NOTE:

It is recommended that
Tow Knees be only stitch welded.
This is to prevent excessive heat
build-up during installation



CODE NO.	DURAMAX® PART NO.	R RADIUS	A PLATE THICKNESS	B WIDTH	C LENGTH	WEIGHT PER UNIT
DB-1909	802190906	Variable	1/2"	10"	35-1/2"	53 lbs.



1074 Kenran Industrial Dr.
 St. Louis, MO 63137
 Phone: 1-800-381-9968

HUMCO FENDERING/BUMPERS

Duramax Tow Knee Pusher Plates

TOW KNEES (CONTINUED)

The chart below applies to all Tow Knees.

Specify carbon steel or aluminum plate with any style Tow Knee at time of order.

