



1074 Kenran Industrial Dr.  
St. Louis, MO 63137  
Phone: 1-800-381-9968

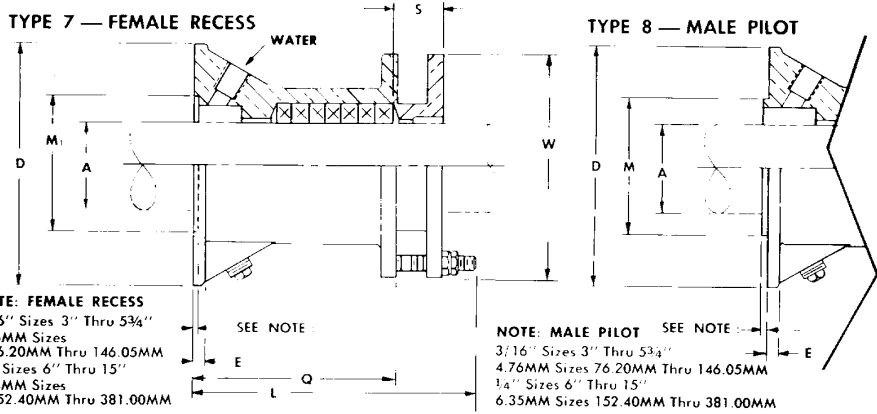
# HUMCO SHAFT ACCESSORIES

## Johnson® Standard Forward Stern Tube Stuffing Box: Water Service



### Standard Forward Stern Tube Stuffing Box Dimensions -

(FIG. 1789 WATER SERVICE)



A	FIG. 1789 AND CODE NO.	WITH FEMALE RECESS FOR FLANGE BEARING		WITH MALE PILOT FOR DBA-2 ASSEMBLY		STUFFING BOX FLANGE DIAMETER	STUFFING BOX FLANGE THICKNESS	MALE PILOT DIAMETER	FEMALE RECESS DIAMETER	STUFFING BOX LENGTH	OVERALL LENGTH	GLAND LENGTH	GLAND DIAMETER	PACKING O.D.	PACKING SIZE	NO. OF PACKING RINGS	
		TYPE 7	TYPE 8	D	E												M
INCHES MM	J.R. PART No. 260005	INCHES MM	INCHES MM	INCHES MM	INCHES MM	INCHES MM	INCHES MM	INCHES MM	INCHES MM	INCHES MM	INCHES MM	INCHES MM	INCHES MM	INCHES MM	INCHES MM	INCHES MM	
3	0300	476	—	7 1/2	190.50	11.11	4 1/2	114.30	120.65	160.34	215.90	36.51	7	177.80	101.60	12.70	7
3 1/4	0314	480	—	7 1/2	190.50	11.11	—	—	120.65	160.34	215.90	36.51	7	177.80	107.95	12.70	7
3 1/2	0312	484	485	8 1/8	206.38	15.88	4 1/2	114.30	133.35	160.34	220.66	41.28	193.68	114.30	12.70	7	
3 3/4	0334	488	—	8 1/8	206.38	15.88	—	—	133.35	160.34	220.66	41.28	193.68	120.65	12.70	7	
4	0400	492	493	8 3/8	219.08	15.88	5 1/2	139.70	146.05	160.34	220.66	41.28	206.38	127.00	12.70	7	
4 1/4	0414	496	497	8 3/8	219.08	15.88	5 1/2	139.70	146.05	160.34	220.66	41.28	206.38	133.35	12.70	7	
4 1/2	0412	500	501	9 3/8	238.13	20.64	6 1/8	155.58	165.10	185.75	252.41	47.63	225.43	146.05	15.88	7	
4 3/4	0434	504	505	9 3/8	238.13	20.64	6 1/8	155.58	165.10	185.75	252.41	47.63	225.43	152.40	15.88	7	
5	0500	508	509	10 1/8	257.18	20.64	6 1/2	165.10	184.15	217.49	303.21	60.33	244.48	165.10	19.05	7	
5 1/4	0514	512	513	10 1/8	257.18	20.64	6 1/2	165.10	184.15	217.49	303.21	60.33	244.48	171.45	19.05	7	
5 1/2	0512	516	517	10 5/8	269.88	20.64	7 1/2	190.50	196.85	217.49	303.21	60.33	257.18	177.80	19.05	7	
5 3/4	0534	520	521	10 5/8	269.88	20.64	7 1/2	190.50	196.85	217.49	303.21	60.33	257.18	184.15	19.05	7	
6	0600	524	525	11 3/8	288.93	20.64	8	203.20	203.20	222.25	323.85	76.20	282.58	190.50	19.05	7	
6 1/4	0614	528	529	11 3/8	288.93	20.64	8	203.20	203.20	222.25	323.85	76.20	282.58	196.85	19.05	7	
6 1/2	0612	532	533	13 1/2	342.90	22.23	8 1/2	215.90	219.08	247.65	349.25	76.20	307.98	209.55	22.23	7	
6 5/8	0658	534	—	13 1/2	342.90	22.23	—	—	219.08	247.65	349.25	76.20	307.98	212.73	22.23	7	
6 3/4	0634	536	537	13 3/4	349.25	22.23	8 1/2	215.90	228.60	247.65	349.25	76.20	317.50	215.90	23.23	7	
6 7/8	0678	538	—	13 3/4	349.25	22.23	—	—	228.60	247.65	349.25	76.20	317.50	219.08	22.23	7	
7	0700	540	541	13 3/4	349.25	22.23	9 1/4	234.95	228.60	247.65	349.25	76.20	317.50	222.25	22.23	7	
7 1/8	0718	542	—	14 1/8	358.78	22.23	—	—	244.48	282.58	396.88	88.90	327.03	231.78	25.40	7	
7 1/4	0714	544	545	14 1/8	358.78	22.23	9 1/4	234.95	244.48	282.58	396.88	88.90	327.03	234.95	25.40	7	
7 3/8	0738	546	—	14 1/8	358.78	22.23	—	—	244.48	282.58	396.88	88.90	327.03	238.13	25.40	7	
7 1/2	0712	548	549	14 1/2	368.30	22.23	10 1/4	254.00	282.58	396.88	88.90	336.55	241.30	25.40	7		



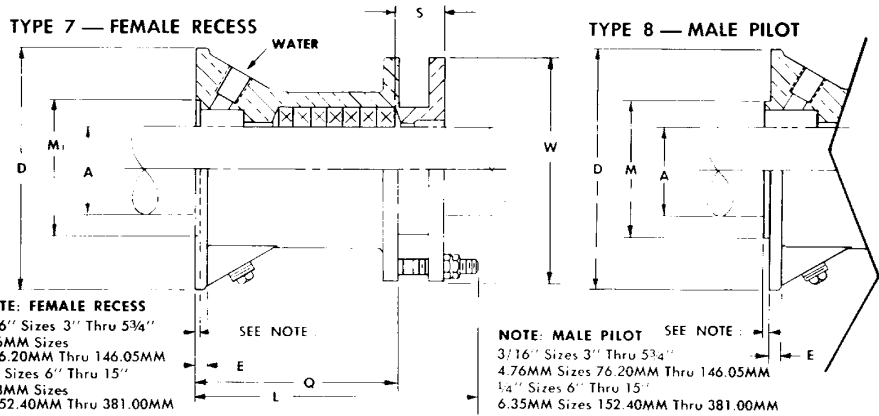
1074 Kenran Industrial Dr.  
St. Louis, MO 63137  
Phone: 1-800-381-9968

# HUMCO SHAFT ACCESSORIES

## Johnson® Standard Forward Stern Tube Stuffing Box: Water Service



### Standard Forward Stern Tube Stuffing Box Dimensions - (FIG. 1789 WATER SERVICE)



A	O.D. SHAFT OR SLEEVE JOURNAL	FIG. 1789 AND CODE NO.	WITH FEMALE RECESS FOR FLANGE BEARING TYPE 7		WITH MALE PILOT FOR DBA-2 ASSEMBLY TYPE 8		D	E	M	M <sub>1</sub>	Q	L	S	W	PACKING O.D.	PACKING SIZE	NO. OF PACKING RINGS		
			J.R. PART No. 260005	INCHES MM	INCHES MM	INCHES MM												INCHES MM	INCHES MM
7 5/8	193.68	0758	550	—	14 1/2	368.30	2 3/8	22.23	—	10	11 1/8	15 5/8	3 1/2	13 3/4	9 5/8	244.48	25.40	7	
7 3/4	196.85	0734	552	553	14 1/2	368.30	2 3/8	22.23	10 3/4	260.35	254.00	11 1/8	15 5/8	3 1/2	13 3/4	9 3/4	247.65	25.40	7
7 7/8	200.03	0778	554	—	14 7/8	377.83	2 3/8	22.23	—	10 3/8	263.53	282.58	3 1/2	13 3/8	9 7/8	250.83	25.40	7	
8	203.20	0800	556	557	14 7/8	377.83	2 3/8	22.23	10 3/4	260.35	263.53	11 1/8	15 5/8	3 1/2	13 3/8	10	254.00	25.40	7
8 1/8	206.38	0818	558	—	14 7/8	377.83	2 3/8	22.23	—	10 3/8	263.53	282.58	3 1/2	13 3/8	10 1/8	257.18	25.40	7	
8 1/4	209.55	0814	560	561	15 1/4	387.35	2 3/8	22.23	11	10 3/4	273.05	282.58	3 1/2	14	10 1/4	260.35	25.40	7	
8 3/8	212.73	0838	562	—	15 1/4	387.35	2 3/8	22.23	—	10 3/4	273.05	282.58	3 1/2	14	10 3/8	263.53	25.40	7	
8 1/2	215.90	0812	564	565	15 1/2	387.35	2 3/8	22.23	11	10 3/4	273.05	282.58	3 1/2	14	10 1/2	266.70	25.40	7	
8 5/8	219.08	0858	566	—	15 5/8	396.88	1	25.40	—	11 1/8	282.58	282.58	3 1/2	14 3/8	10 5/8	269.88	25.40	7	
8 3/4	222.25	0834	568	569	15 5/8	396.88	1	25.40	11	11 1/8	282.58	282.58	3 1/2	14 3/8	10 3/4	273.05	25.40	7	
8 7/8	225.43	0878	570	—	15 5/8	396.88	1	25.40	—	11 1/8	282.58	282.58	3 1/2	14 3/8	10 7/8	276.23	25.40	7	
9	228.60	0900	572	573	16	406.40	1	25.40	11 3/4	298.45	292.10	11 1/8	15 5/8	3 1/2	14 3/4	11	279.40	25.40	7
9 1/8	231.78	0918	574	—	16	406.40	1	25.40	—	11 1/2	292.10	282.58	3 1/2	14 3/4	11 1/8	282.58	25.40	7	
9 1/4	234.95	0914	576	577	16	406.40	1	25.40	11 3/4	298.45	292.10	11 1/8	15 5/8	3 1/2	14 3/4	11 1/4	285.75	25.40	7
9 3/8	238.13	0938	578	—	16 3/8	415.93	1	25.40	—	11 1/8	301.63	282.58	3 1/2	15 1/8	11 1/8	288.93	25.40	7	
9 1/2	241.30	0912	580	581	16 3/8	415.93	1	25.40	11 3/4	298.45	301.63	11 1/8	15 5/8	3 1/2	15 1/8	11 1/2	292.10	25.40	7
9 5/8	244.48	0958	582	—	16 3/8	415.93	1	25.40	—	11 1/8	301.63	282.58	3 1/2	15 1/8	11 1/8	295.28	25.40	7	
9 3/4	247.65	0934	584	585	16 7/8	428.63	1	25.40	12 3/4	323.85	314.33	11 1/8	15 5/8	3 1/2	15 1/2	11 3/4	298.45	25.40	7
9 7/8	250.83	0978	586	—	16 7/8	428.63	1	25.40	—	12 3/8	314.33	282.58	3 1/2	15 1/2	11 7/8	301.63	25.40	7	
10	254.00	1000	588	589	16 7/8	428.63	1	25.40	12 3/4	323.85	314.33	11 1/8	15 5/8	3 1/2	15 1/2	12	304.80	25.40	7
10 1/8	257.18	1018	590	—	17 1/8	454.03	1	25.40	—	12 3/4	323.85	282.58	3 1/2	16	12 1/2	307.98	25.40	7	
10 1/4	260.35	1014	592	593	17 1/8	454.03	1	25.40	12 3/4	323.85	323.85	11 3/4	16 1/4	3 1/2	16	12 1/4	311.15	25.40	7
10 3/8	263.53	1038	594	—	17 1/8	454.03	1	25.40	—	12 3/4	323.85	298.45	3 1/2	16	12 3/8	314.33	25.40	7	



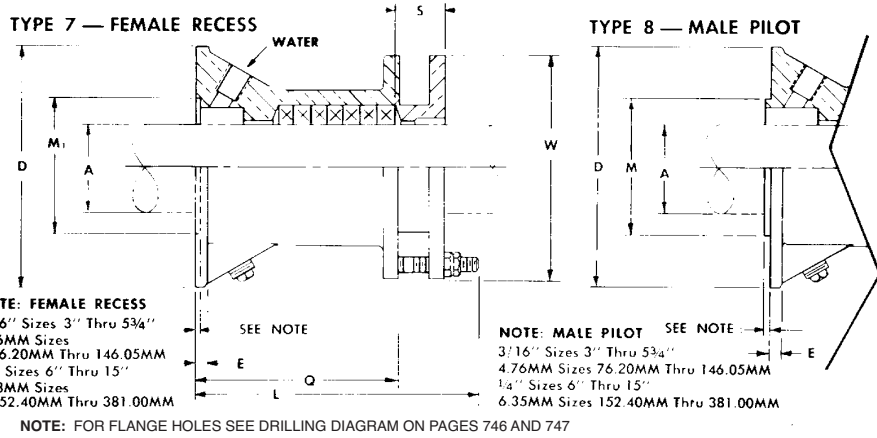
1074 Kenran Industrial Dr.  
St. Louis, MO 63137  
Phone: 1-800-381-9968

# HUMCO SHAFT ACCESSORIES

## Johnson® Standard Forward Stern Tube Stuffing Box: Water Service



### Standard Forward Stern Tube Stuffing Box Dimensions - (FIG. 1789 WATER SERVICE)



A	O.D. SHAFT OR SLEEVE JOURNAL	FIG. 1789 AND CODE NO.	WITH FEMALE RECESS FOR FLANGE BEARING		WITH MALE PILOT FOR DBA-2 ASSEMBLY		D	E	M	M <sub>1</sub>	Q	L	S	W	PACKING O.D.	PACKING SIZE	NO. OF PACKING RINGS
			TYPE 7	TYPE 8	J.R. PART No. 260005	J.R. PART No. 260005											
INCHES MM			INCHES MM	INCHES MM	INCHES MM	INCHES MM	INCHES MM	INCHES MM	INCHES MM	INCHES MM	INCHES MM	INCHES MM	INCHES MM	INCHES MM	INCHES MM	INCHES MM	INCHES MM
10 1/2 266.70	1012	596	597	18 1/4 463.55	1 25.40	13 3/4 349.25	13 1/8 333.38	11 1/8 282.58	16 1/4 412.75	3 1/2 88.90	16 3/8 415.93	12 1/2 317.50	1 25.40	7			
10 5/8 269.88	1058	598	—	18 1/4 463.55	1 25.40	—	13 3/8 333.38	11 3/4 298.45	16 1/4 412.75	3 1/2 88.90	16 3/8 415.93	12 5/8 320.68	1 25.40	7			
10 3/4 273.05	1034	600	601	18 1/4 463.55	1 25.40	13 3/4 349.25	13 3/8 333.38	11 1/4 298.45	16 1/4 412.75	3 1/2 88.90	16 3/8 415.93	12 3/4 323.85	1 25.40	7			
10 7/8 276.23	1078	602	—	18 5/8 473.08	1 25.40	—	13 1/2 342.90	11 3/4 298.45	16 1/4 412.75	3 1/2 88.90	16 3/4 425.45	12 7/8 327.03	1 25.40	7			
11 279.40	1100	604	605	18 5/8 473.08	1 25.40	13 3/4 349.25	13 1/2 342.90	11 3/4 298.45	16 1/4 412.75	3 1/2 88.90	16 3/4 425.45	13 330.20	1 25.40	7			
11 1/8 282.58	1118	606	—	18 5/8 473.08	1 25.40	—	13 1/2 342.90	11 1/4 298.45	16 1/4 412.75	3 1/2 88.90	16 3/4 425.45	13 1/8 333.38	1 25.40	7			
11 1/4 285.75	1114	608	609	19 482.60	1 25.40	14 1/2 368.30	13 7/8 352.43	11 3/4 298.45	16 1/4 412.75	3 1/2 88.90	17 1/8 434.98	13 1/4 336.55	1 25.40	7			
11 3/8 288.93	1138	610	—	19 482.60	1 25.40	—	13 7/8 352.43	11 1/8 282.58	16 1/4 412.75	3 1/2 88.90	17 1/8 434.98	13 3/8 339.73	1 25.40	7			
11 1/2 292.10	1112	612	613	19 482.60	1 25.40	14 1/2 368.30	13 3/8 352.43	11 3/4 298.45	16 1/4 412.75	3 1/2 88.90	17 1/8 434.98	13 1/2 342.90	1 25.40	7			
11 5/8 295.28	1158	614	—	19 3/8 492.13	1 25.40	—	14 1/8 353.78	11 3/4 298.45	16 1/4 412.75	3 1/2 88.90	17 1/2 444.50	13 5/8 346.08	1 25.40	7			
11 3/4 298.45	1134	616	617	19 3/8 492.13	1 25.40	14 1/2 368.30	14 1/8 353.78	11 3/4 298.45	16 1/4 412.75	3 1/2 88.90	17 1/2 444.50	13 3/4 349.25	1 25.40	7			
11 7/8 304.63	1178	618	—	19 3/8 492.13	1 25.40	—	14 1/8 353.78	11 1/8 282.58	16 1/4 412.75	3 1/2 88.90	17 1/2 444.50	13 7/8 353.43	1 25.40	7			
12 309.80	1200	620	621	19 3/4 501.65	1 25.40	15 1/2 393.70	14 1/2 368.30	11 3/8 295.28	16 3/8 415.93	3 3/4 95.25	17 3/8 454.03	14 355.61	1 25.40	7			
12 1/8 307.98	1218	622	—	19 3/4 501.65	1 25.40	—	14 1/2 368.30	11 5/8 295.28	16 3/8 415.93	3 3/4 95.25	17 3/8 454.03	14 1/8 358.78	1 25.40	7			
12 1/4 311.15	1214	624	625	19 3/4 501.65	1 25.40	15 1/2 393.70	14 1/2 368.30	11 5/8 295.28	16 3/8 415.93	3 3/4 95.25	17 3/8 454.03	14 1/4 361.95	1 25.40	7			
12 3/8 314.33	1238	626	—	20 1/8 511.18	1 1/8 28.58	—	15 1/8 384.18	11 3/8 295.28	16 3/8 415.93	3 3/4 95.25	18 1/4 463.55	14 3/8 365.13	1 25.40	7			
12 1/2 317.50	1212	628	629	20 1/8 511.18	1 1/8 28.58	15 1/2 393.70	15 1/8 384.18	11 3/8 295.28	16 3/8 415.93	3 3/4 95.25	18 1/4 463.55	14 1/2 368.30	1 25.40	7			
12 5/8 320.68	1258	630	—	20 5/8 511.18	1 1/8 28.58	—	15 1/2 384.18	11 5/8 295.28	16 3/8 415.93	3 3/4 95.25	18 1/2 463.55	14 5/8 371.48	1 25.40	7			
12 3/4 323.85	1234	632	633	20 1/2 520.70	1 1/8 28.58	16 1/4 412.75	15 1/2 393.70	11 5/8 295.28	16 3/8 415.93	3 3/4 95.25	18 5/8 473.08	14 3/4 374.65	1 25.40	7			
12 7/8 327.03	1278	634	—	20 7/8 520.70	1 1/8 28.58	—	15 1/2 393.70	11 5/8 295.28	16 3/8 415.93	3 3/4 95.25	18 5/8 473.08	14 7/8 377.83	1 25.40	7			
13 330.20	1300	636	637	20 7/8 520.70	1 1/8 28.58	16 1/4 412.75	15 1/2 393.70	11 5/8 295.28	16 3/8 415.93	3 3/4 95.25	18 5/8 473.08	15 381.00	1 25.40	7			
13 1/8 333.38	1318	638	—	21 533.40	1 1/8 28.58	—	15 3/4 400.05	11 5/8 295.28	16 3/8 415.93	3 3/4 95.25	19 1/8 485.78	15 1/8 384.18	1 25.40	7			
13 1/4 336.55	1314	640	641	21 533.40	1 1/8 28.58	16 1/4 412.75	15 3/4 400.05	11 5/8 295.28	16 3/8 415.93	3 3/4 95.25	19 1/8 485.78	15 1/4 387.35	1 25.40	7			



1074 Kenran Industrial Dr.  
St. Louis, MO 63137  
Phone: 1-800-381-9968

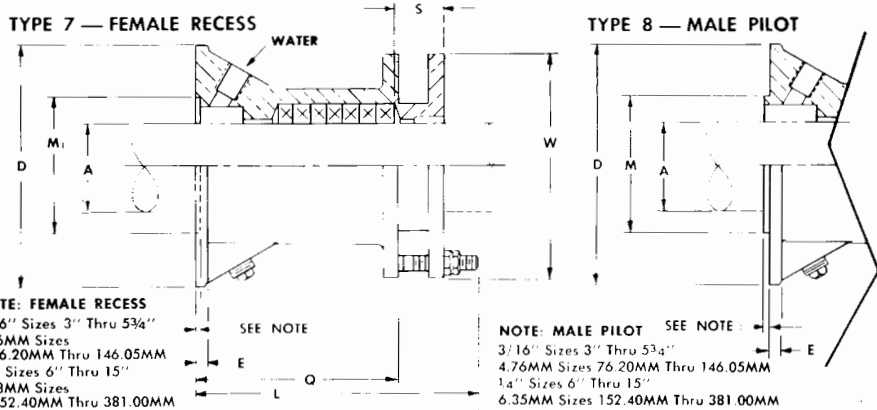
# HUMCO SHAFT ACCESSORIES

## Johnson® Standard Forward Stern Tube Stuffing Box: Water Service



### Standard Forward Stern Tube Stuffing Box Dimensions —

(FIG. 1789 WATER SERVICE)



A	O.D. SHAFT OR SLEEVE JOURNAL	FIG. 1789 AND CODE NO.		WITH FEMALE RECESS FOR FLANGE BEARING		WITH MALE PILOT FOR DBA-2 ASSEMBLY		D	E	M	M <sub>1</sub>	Q	L	S	W	PACKING O.D.	PACKING SIZE	NO. OF PACKING RINGS
		TYPE 7		TYPE 8														
		J.R. PART No.	260005	INCHES	MM	INCHES	MM											
13 3/8	339.73	1338	642	—	21	1 1/8	—	15 3/4	11 5/8	16 3/8	—	11 5/8	16 3/8	3 3/4	19 1/8	15 3/8	1	7
13 1/2	342.90	1312	644	645	21 3/8	1 1/8	17 1/4	16 1/4	11 5/8	16 3/8	—	11 5/8	16 3/8	3 3/4	19 1/2	15 1/2	1	7
13 5/8	346.08	1358	646	—	21 3/8	1 1/8	—	16 1/4	11 5/8	16 3/8	—	11 5/8	16 3/8	3 3/4	19 1/2	15 5/8	1	7
13 3/4	349.25	1334	648	649	21 3/8	1 1/8	17 1/4	16 1/4	11 5/8	16 3/8	—	11 5/8	16 3/8	3 3/4	19 1/2	15 3/4	1	7
13 7/8	352.43	1378	650	—	21 3/4	1 1/4	—	16 3/8	11 5/8	16 3/8	—	11 5/8	16 3/8	3 3/4	19 7/8	15 7/8	1	7
14	355.60	1400	652	653	21 3/4	1 1/8	17 1/4	16 3/8	11 5/8	16 3/8	—	11 5/8	16 3/8	3 3/4	19 7/8	16	1	7
14 1/8	358.78	1418	654	—	21 3/4	1 1/8	—	16 3/8	11 5/8	16 3/8	—	11 5/8	16 3/8	3 3/4	19 7/8	16 1/8	1	7
14 1/4	361.95	1414	656	657	22 1/8	1 1/8	18 1/4	17 1/4	11 7/8	16 3/8	—	11 7/8	16 3/8	3 3/4	20 1/4	16 1/4	1	7
14 3/8	365.13	1438	658	—	22 1/8	1 1/8	—	17 1/4	11 7/8	16 5/8	—	11 7/8	16 5/8	3 3/4	20 1/4	16 3/8	1	7
14 1/2	368.30	1412	660	661	22 1/4	1 1/8	18 1/4	17 1/4	11 7/8	16 3/8	—	11 7/8	16 3/8	3 3/4	20 1/4	16 1/2	1	7
14 5/8	371.48	1458	662	—	22 1/2	1 1/8	—	17 1/2	11 7/8	16 5/8	—	11 7/8	16 5/8	3 3/4	20 5/8	16 5/8	1	7
14 3/4	374.65	1434	664	665	22 1/2	1 1/8	18 1/4	17 1/2	11 7/8	16 3/8	—	11 7/8	16 3/8	3 3/4	20 5/8	16 3/4	1	7
14 7/8	377.83	1478	666	—	22 3/4	1 1/8	—	17 3/4	11 7/8	16 3/8	—	11 7/8	16 3/8	3 3/4	20 7/8	16 7/8	1	7
15	381.00	1500	668	669	22 3/4	1 1/8	19	17 3/4	11 7/8	16 5/8	—	11 7/8	16 5/8	3 3/4	20 7/8	17	1	7