



1074 Kenran Industrial Dr.
St. Louis, MO 63137
Phone: 1-800-381-9968

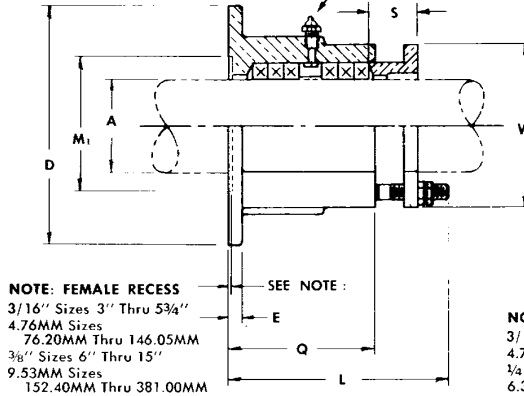
HUMCO SHAFT ACCESSORIES

Johnson® Forward Stern Tube and Bulkhead Stuffing Box: Grease Service



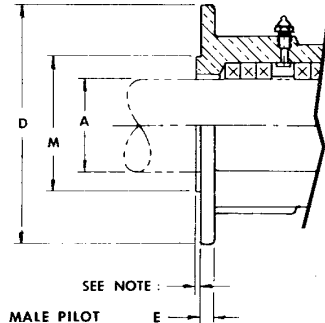
Forward Stern Tube And Bulkhead Stuffing Box Dimensions —

TYPE 9 - FEMALE RECESS



NOTE: FEMALE RECESS
3/16" Sizes 3" Thru 5 3/4"
4.76MM Sizes
76.20MM Thru 146.05MM
3/8" Sizes 6" Thru 15"
9.53MM Sizes
152.40MM Thru 381.00MM

TYPE 10 - MALE PILOT



NOTE: MALE PILOT
3/16" Sizes 3" Thru 5 3/4"
4.76MM Sizes 76.20MM Thru 146.05MM
1/4" Sizes 6" Thru 15"
6.35MM Sizes 152.40MM Thru 381.00MM

(FIG. 1790 GREASE SERVICE)

NOTE: FOR FLANGE HOLES SEE DRILLING DIAGRAM ON PAGES 746 AND 747

A	O.D. SHAFT OR SLEEVE JOURNAL	FIG. 1790 AND CODE NO.	WITH FEMALE RECESS FOR FLANGE BEARING TYPE 9	WITH MALE PILOT FOR DBA-2 ASSEMBLY TYPE 10	D	E	M	M ₁	Q	L	S	W	PACKING O.D.	PACKING SIZE	NO. OF PACKING RINGS
3	76.20	0300	246	—	7 1/2	3/16	—	4 3/4	4 1/8	6 3/4	1 1/8	7	4	12.70	6
3 1/4	82.55	0314	250	—	7 1/2	3/16	—	4 3/4	4 1/8	6 3/4	1 1/8	7	4 1/4	12.70	6
3 1/2	88.90	0312	254	255	8 1/8	5/8	114.30	5 1/4	4 1/8	6 1/2	1 3/8	7 3/8	4 1/2	12.70	6
3 3/4	95.25	0334	258	—	8 1/8	5/8	—	5 1/4	4 1/8	6 1/2	1 3/8	7 3/8	4 1/4	12.70	6
4	101.60	0400	262	263	8 5/8	5/8	139.70	5 3/4	4 1/8	6 1/2	1 5/8	8 1/8	5	12.70	6
4 1/4	107.95	0414	266	267	8 5/8	5/8	139.70	5 3/4	4 1/8	6 1/2	1 5/8	8 1/8	5 1/4	12.70	6
4 1/2	114.30	0412	270	271	9 3/8	1 1/16	155.58	6 1/2	5	7 3/8	1 7/8	8 7/8	5 3/4	15.88	6
4 3/4	120.65	0434	274	275	9 3/8	1 1/16	155.58	6 1/2	5	7 3/8	1 7/8	8 7/8	6	15.88	6
5	127.00	0500	278	279	10 1/8	1 3/16	165.10	7 1/4	5 7/8	9 1/4	2 3/8	9 5/8	6 1/2	19.05	6
5 1/4	133.35	0514	282	283	10 1/8	1 3/16	165.10	7 1/4	5 7/8	9 1/4	2 3/8	9 5/8	6 3/4	19.05	6
5 1/2	139.70	0512	286	287	10 3/8	1 3/16	190.50	7 3/4	5 7/8	9 1/4	2 3/8	10 1/8	7	19.05	6
5 3/4	146.05	0534	290	291	10 5/8	1 3/16	190.50	7 3/4	5 7/8	9 1/4	2 3/8	10 1/8	7 1/4	19.05	6
6	152.40	0600	294	295	11 3/8	1 3/16	203.20	8	6	10	3	11 1/8	7 1/2	19.05	6
6 1/4	158.75	0614	298	299	11 3/8	1 3/16	203.20	8	6	10	3	11 1/8	7 3/4	19.05	6
6 1/2	165.10	0612	302	303	13 1/2	7/8	215.90	8 5/8	6 7/8	10 7/8	3	12 1/8	8 1/4	22.23	6
6 3/8	168.28	0658	304	—	13 1/2	7/8	—	8 5/8	6 7/8	10 7/8	3	12 1/8	8 3/8	22.23	6
6 3/4	171.45	0634	306	307	13 3/4	7/8	215.90	9	6 7/8	10 7/8	3	12 1/2	8 1/2	22.23	6
6 7/8	174.63	0678	308	—	13 3/4	7/8	—	9	6 7/8	10 7/8	3	12 1/2	8 3/8	22.23	6
7	177.80	0700	310	311	13 3/4	7/8	234.95	9 1/4	6 7/8	10 7/8	3	12 1/2	8 3/4	22.23	6

9