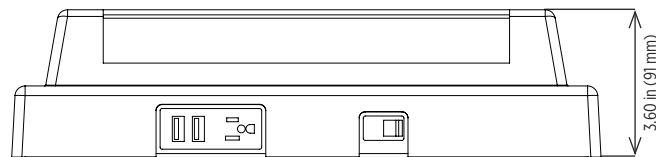
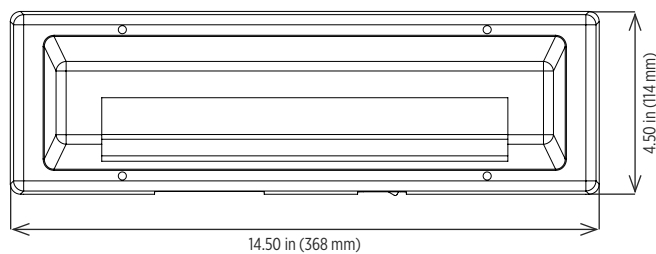




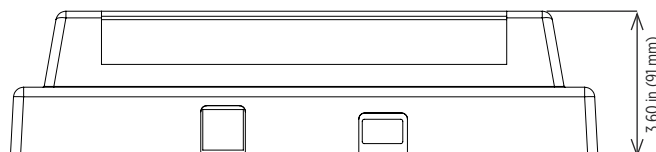
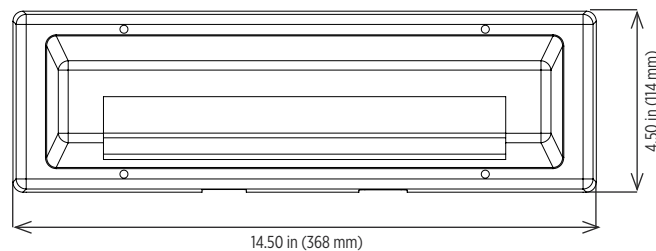
Marine, below-deck fixture for berth, mirror, and bunk lighting
Durable, marine grade components offer resistance against corrosion and high vibration
LED technology increases efficiency, eliminates maintenance and supports green initiatives

Dimensions

USB



LS-LR



Specifications

Construction	Corrosion-resistant, marine grade, low-copper content aluminum alloy housing White ABS material cover
Hardware	Stainless steel external hardware
Lens	Diffuse acrylic lens
Light source	Philips light emitting diodes (LED) 14W, up to 520 lumens 2x8W fluorescent equivalent Warm white (3000K)
Power source	120V, 50/60Hz Over-voltage and short-circuit protection with auto-recovery
Wiring	120V three-wire convenience outlet On/off rocker switch Two (2) USB ports - option
Ambient operating temperature	0°C to +25°C
Mounting	Wall mount
Weight	3.0 lb (1.1 kg)
Warranty	3 years

For IES files, see website or contact factory

Compliances

- UL/cUL Listed to:
- UL 1598 Suitable for Damp Locations
 - UL 1598A Marine Inside Type
 - CSA C22.2 No. 250.0-08
- ABS



Ordering Information

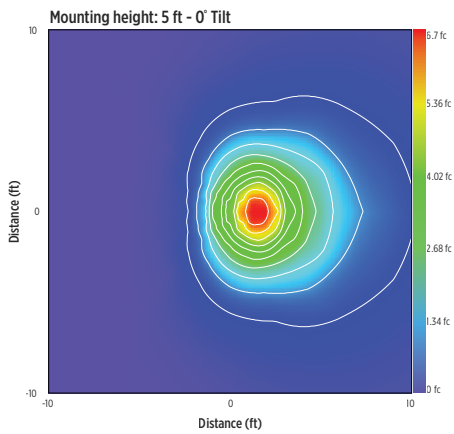
Example: LEDBM-120-WW-USB

Fixture	Voltage	Color Temperature	Option
LEDBM	120	WW	USB
			LS-LR

Voltage		Color Temperature		Option	
120	120V AC driver	WW	Warm white (3000K)	USB	Comes with switch, receptacle and two (2) USB ports
				LS-LR	Option without switch, receptacle and USB ports

Special Projects: We may be able to accommodate your special projects, so please don't hesitate to ask about additional options. Minimum order quantities and/or extended lead times will apply. Contact your Phoenix representative with specific inquiries.

Isolux Chart



Product design and specifications are subject to change without notice. The most current version of this specification sheet can be found on our website: www.phoenixlighting.com.