



1074 Kenran Industrial Blvd
 Saint Louis, MO 63137
 Phone: (800) 381-9968

HUMCO Lights

Phoenix SturdiSignal Series Navigation Light

PHOENIX[®]
 DURABILITY X DESIGN™



SturdiSignal™ Series

Navigation Light

Modular design allows for toolless maintenance at sea, no electrician required

Provides safe and reliable illumination up to 6 nautical miles

Built in sensor continuously monitors LED brightness

Autonomous operation doubles the LED lifetime for long lasting reliability

Various visibility ranges and LED color options for maximum versatility

Designed and manufactured in the USA

Specifications

Construction	Marine grade, machined aluminum housing Seawater resistant
Light source	High powered LED 1-3 LEDs - single head 2-6 LEDs - double head (backup system/autonomous operation)
Visibility	Under 50 m - 2 NM or 5 NM Over 50 m - 3 NM or 6 NM
Lens	UV stabilized polycarbonate 2 NM, 3 NM for port/starboard/stern/towing/all-round signaling 5 NM, 6 NM for mast head 5 NM all-round white for maneuvering
Driver	120-240 VAC 12-32 VDC
Finish	MIL-A-8625 Type 2 clear anodize
Mounting	4-hole ½ inch King Starboard polymer plate 3 sizes (5.50 x 5.50 inch, 6.00 x 6.00 inch or 7.00 x 7.00 inch)
Cord/Plug	½ inch NPT cable gland
Operating lifetime	50,000 hours
Controls/Monitoring	LED Intensity Monitoring IMO Resolution MSC 253 (83) 4.3 model Monitors LED intensity to verify light remains COLREG compliant Automatically notifies alarm panel when non-compliant Notifies alarm panel when approaching end of life (50,000 hours)
Autonomous operation	Double head - 1 power input, alternates heads at start up to extend life. Monitors LED intensity and auto switches over if a head is non-compliant.
Dimensions	2.2 lbs (1 kg) 6.00 inch (152.4 mm) height 3.50 inch (89 mm) diameter
Application	Vessels greater than 20 m in length
Warranty	5 years

Contact factory for IES files

Compliances

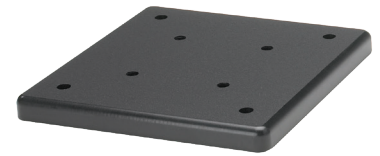
UL 1104
 IMO Resolution MSC 253 (83) 4.3
 ABS (pending)
 IP67



Example: 54

Choose One (1) Mounting Plate per Fixture:

Description	
54	5.5" x 5.5" with four (4) mounting holes, 4" centers
5B	5.5" x 5.5" with no holes/blank
64	6" x 6" with four (4) mounting holes, 4.7" centers
6B	6" x 6" with no holes/blank
76	7" x 7" with four (4) mounting holes, 6" centers
7B	7" x 7" with no holes/blank



SturdiSignal™ Series
Mounting Plate

Optional Mounting

VM	vertical mounting with mounting plate
PM	3" pipe mount with mounting plate
DM	four (4) ¼-20 female threads, 2.03" centers

Quick Reference: Fit Existing Fixtures

Plate	Fixture Name
64	Aqua Signal Series 55
76 (6" centers) or 7B	Aqua Signal Series 70 (6.12" centers)
54	McDermott TB3
76	McDermott large 5 and 6 NM (nautical mile)
76	Perko 1077-1080 Series (double stack system)
54	Perko 1127-1130 Series
54	Perko 1377-1380 Series
64	DHR 60 Series
76	DHR 80 Series
76	Peters & Bay 780 Series



Example: SM-0101-PT2ACSN-XX

AC, Single Head (No Monitoring)

Fixture	Index No.	Model No.	Mounting Plate	Description	Replacement LED Module
SM	0101	PT2ACSN	XX	Port 112.5° red, 2 NM, AC, 1 input single head, no monitoring	PT2SN
SM	0102	SB2ACSN	XX	Starboard 112.5° green, 2 NM, AC, 1 input single head, no monitoring	SB2SN
SM	0103	ST2ACSN	XX	Stern 135° white, 2 NM, AC, 1 input single head, no monitoring	ST2SN
SM	0104	MH5ACSN	XX	Masthead 225° white, 5 NM, > 20 meters < 50 meters, AC, 1 input single head, no monitoring	MH5SN
SM	0105	AW2ACSN	XX	All Round 360° white, 2 NM, < 50 meters, AC, 1 input single head, no monitoring	AW2SN
SM	0106	AW5ACSN	XX	All Round 360° white, 5 NM, Maneuvering, AC, 1 input single head, no monitoring	AW5SN
SM	0107	AG2ACSN	XX	All Round 360° green 2 NM, < 50 meters AC, 1 input single head, no monitoring	AG2SN
SM	0108	AR2ACSN	XX	All Round 360° red 2 NM, < 50 meters AC, 1 input single head, no monitoring	AR2SN
SM	0109	AY2ACSN	XX	All Round 360° yellow 2 NM, < 50 meters, AC, 1 input single head, no monitoring	AY2SN
SM	0110	TW2ACSN	XX	Tow 135° yellow, 2 NM, AC, 1 input single head, no monitoring	TW2SN
SM	0111	HV2ACSN	XX	Hovercraft 120fpm 360° yellow, 2 NM, AC, 1 input single head, no monitoring	HV2SN
SM	0112	SP2ACSN	XX	Special Flash 60fpm 225° yellow, 2 NM, AC, 1 input single head, no monitoring	SP2SN

Replacement Parts:

Power Connector (AC1)
Base, one input (BASE1)
UV Lens (LENS)

Mounting Plate (choose 1 per fixture):

5.5" x 5.5" - 4 mounting holes, 4" centers (plate 54)
6" x 6" - 4 mounting holes, 4.7" centers (plate 64)
7" x 7" - 4 mounting holes, 6" centers (plate 76)

5.5" x 5.5" - no holes/blank (plate 5B)
6" x 6" - no holes/blank (plate 6B)
7" x 7" - no holes/blank (plate 7B)

DC, Single Head (No Monitoring)

Fixture	Index No.	Model No.	Mounting Plate	Description	Replacement LED Module
SM	0201	PT2DCSN	XX	Port 112.5° red, 2 NM, DC, 1 input single head, no monitoring	PT2SN
SM	0202	SB2DCSN	XX	Starboard 112.5° green, 2 NM, DC, 1 input single head, no monitoring	SB2SN
SM	0203	ST2DCSN	XX	Stern 135° white, 2 NM, DC, 1 input single head, no monitoring	ST2SN
SM	0204	MH5DCSN	XX	Masthead 225° white, 5 NM, > 20 meters < 50 meters, DC, 1 input single head, no monitoring	MH5SN
SM	0205	AW2DCSN	XX	All Round 360° white, 2 NM, < 50 meters, DC, 1 input single head, no monitoring	AW2SN
SM	0206	AW5DCSN	XX	All Round 360° white, 5 NM, Maneuvering, DC, 1 input single head, no monitoring	AW5SN
SM	0207	AG2DCSN	XX	All Round 360° green 2 NM, < 50 meters DC, 1 input single head, no monitoring	AG2SN
SM	0208	AR2DCSN	XX	All Round 360° red 2 NM, < 50 meters DC, 1 input single head, no monitoring	AR2SN
SM	0209	AY2DCSN	XX	All Round 360° yellow 2 NM, < 50 meters, DC, 1 input single head, no monitoring	AY2SN
SM	0210	TW2DCSN	XX	Tow 135° yellow, 2 NM, DC, 1 input single head, no monitoring	TW2SN
SM	0211	HV2DCSN	XX	Hovercraft 120fpm 360° yellow, 2 NM, DC, 1 input single head, no monitoring	HV2SN
SM	0212	SP2DCSN	XX	Special Flash 60fpm 225° yellow, 2 NM, DC, 1 input single head, no monitoring	SP2SN

Replacement Parts:

Power Connector (DC1)
Base, one input (BASE1)
UV Lens (LENS)

Mounting Plate (choose 1 per fixture):

5.5" x 5.5" - 4 mounting holes, 4" centers (plate 54)
6" x 6" - 4 mounting holes, 4.7" centers (plate 64)
7" x 7" - 4 mounting holes, 6" centers (plate 76)

5.5" x 5.5" - no holes/blank (plate 5B)
6" x 6" - no holes/blank (plate 6B)
7" x 7" - no holes/blank (plate 7B)

Please see specification sheet for allowable combinations and additional product information.



Navigation Light - Vessel Less than 50 m (165 ft)

Example: SM-0301-PT2ACDN-XX

AC, Double Head (No Monitoring)

Fixture	Index No.	Model No.	Mounting Plate	Description	Replacement LED Module
SM	0301	PT2ACDN	XX	Port 112.5° red, 2 NM, AC, 2 inputs double head, no monitoring	PT2DN
SM	0302	SB2ACDN	XX	Starboard 112.5° green, 2 NM, AC, 2 inputs double head, no monitoring	SB2DN
SM	0303	ST2ACDN	XX	Stern 135° white, 2 NM, AC, 2 inputs double head, no monitoring	ST2DN
SM	0304	MH5ACDN	XX	Masthead 225° white, 5 NM, > 20 meters < 50 meters, AC, 2 inputs double head, no monitoring	MH5DN
SM	0305	AW2ACDN	XX	All Round 360° white, 2 NM, < 50 meters, AC, 2 inputs double head, no monitoring	AW2DN
SM	0306	AW5ACDN	XX	All Round 360° white, 5 NM, Maneuvering, AC, 2 inputs double head, no monitoring	AW5DN
SM	0307	AG2ACDN	XX	All Round 360° green 2 NM, < 50 meters AC, 2 inputs double head, no monitoring	AG2DN
SM	0308	AR2ACDN	XX	All Round 360° red 2 NM, < 50 meters AC, 2 inputs double head, no monitoring	AR2DN
SM	0309	AY2ACDN	XX	All Round 360° yellow 2 NM, < 50 meters AC, 2 inputs double head, no monitoring	AY2DN
SM	0310	TW2ACDN	XX	Tow 135° yellow, 2 NM, AC, 2 inputs double head, no monitoring	TW2DN
SM	0311	HV2ACDN	XX	Hovercraft 120fpm 360° yellow, 2 NM, AC, 2 inputs double head, no monitoring	HV2DN
SM	0312	SP2ACDN	XX	Special Flash 60fpm 225° yellow, 2 NM, AC, 2 inputs double head, no monitoring	SP2DN

Replacement Parts:

Power Connector (AC2)
Base, two inputs (BASE2)
UV Lens (LENS)

Mounting Plate (choose 1 per fixture):

5.5" x 5.5" - 4 mounting holes, 4" centers (plate 54) 5.5" x 5.5" - no holes/blank (plate 5B)
6" x 6" - 4 mounting holes, 4.7" centers (plate 64) 6" x 6" - no holes/blank (plate 6B)
7" x 7" - 4 mounting holes, 6" centers (plate 76) 7" x 7" - no holes/blank (plate 7B)

DC, Double Head (No Monitoring)

Fixture	Index No.	Model No.	Mounting Plate	Description	Replacement LED Module
SM	0401	PT2DCDN	XX	Port 112.5° red, 2 NM, DC, 2 inputs double head, no monitoring	PT2DN
SM	0402	SB2DCDN	XX	Starboard 112.5° green, 2 NM, DC, 2 inputs double head, no monitoring	SB2DN
SM	0403	ST2DCDN	XX	Stern 135° white, 2 NM, DC, 2 inputs double head, no monitoring.	ST2DN
SM	0404	MH5DCDN	XX	Masthead 225° white, 5 NM, > 20 meters < 50 meters, DC, 2 inputs double head, no monitoring	MH5DN
SM	0405	AW2DCDN	XX	All Round 360° white, 2 NM, < 50 meters, DC, 2 inputs double head, no monitoring	AW2DN
SM	0406	AW5DCDN	XX	All Round 360° white, 5 NM, Maneuvering, DC, 2 inputs double head, no monitoring	AW5DN
SM	0407	AG2DCDN	XX	All Round 360° green 2 NM, < 50 meters DC, 2 inputs double head, no monitoring	AG2DN
SM	0408	AR2DCDN	XX	All Round 360° red 2 NM, < 50 meters DC, 2 inputs double head, no monitoring	AR2DN
SM	0409	AY2DCDN	XX	All Round 360° yellow 2 NM, < 50 meters, DC, 2 inputs double head, no monitoring	AY2DN
SM	0410	TW2DCDN	XX	Tow 135° yellow, 2 NM, DC, 2 inputs double head, no monitoring	TW2DN
SM	0411	HV2DCDN	XX	Hovercraft 120fpm 360° yellow, 2 NM, DC, 2 inputs double head, no monitoring	HV2DN
SM	0412	SP2DCDN	XX	Special Flash 60fpm 225° yellow, 2 NM, DC, 2 inputs double head, no monitoring	SP2DN

Replacement Parts:

Power Connector (DC2)
Base, two inputs (BASE2)
UV Lens (LENS)

Mounting Plate (choose 1 per fixture):

5.5" x 5.5" - 4 mounting holes, 4" centers (plate 54) 5.5" x 5.5" - no holes/blank (plate 5B)
6" x 6" - 4 mounting holes, 4.7" centers (plate 64) 6" x 6" - no holes/blank (plate 6B)
7" x 7" - 4 mounting holes, 6" centers (plate 76) 7" x 7" - no holes/blank (plate 7B)

Example: SM-0501-PT2ADDN-XX

AD: AC & DC, Double Head (No Monitoring)

Fixture	Index No.	Model No.	Mounting Plate	Description	Replacement LED Module
SM	0501	PT2ADDN	XX	Port 112.5° red, 2 NM, AD, 2 inputs double head, no monitoring	PT2DN
SM	0502	SB2ADDN	XX	Starboard 112.5° green, 2 NM, AD, 2 inputs double head, no monitoring	SB2DN
SM	0503	ST2ADDN	XX	Stern 135° white, 2 NM, AD, 2 inputs Double head, no monitoring.	ST2DN
SM	0504	MH5ADDN	XX	Masthead 225° white, 5 NM, > 20 meters < 50 meters, AD, 2 inputs double head, no monitoring	MH5DN
SM	0505	AW2ADDN	XX	All Round 360° white, 2 NM, < 50 meters, AD, 2 inputs double head, no monitoring	AW2DN
SM	0506	AW5ADDN	XX	All Round 360° white, 5 NM, Maneuvering, AD, 2 inputs double head, no monitoring	AW5DN
SM	0507	AG2ADDN	XX	All Round 360° green 2 NM, < 50 meters AD, 2 inputs double head, no monitoring	AG2DN
SM	0508	AR2ADDN	XX	All Round 360° red 2 NM, < 50 meters AD, 2 inputs double head, no monitoring	AR2DN
SM	0509	AY2ADDN	XX	All Round 360° yellow 2 NM, < 50 meters, AD, 2 inputs double head, no monitoring	AY2DN
SM	0510	TW2ADDN	XX	Tow 135° yellow, 2 NM, AD, 2 inputs Ddouble head, no monitoring	TW2DN
SM	0511	HV2ADDN	XX	Hovercraft 120fpm 360° yellow, 2 NM, AD, 2 inputs double head, no monitoring	HV2DN
SM	0512	SP2ADDN	XX	Special Flash 60fpm 225° yellow, 2 NM, AD, 2 inputs double head, no monitoring	SP2DN

Replacement Parts:

Power Connector (AD2)
Base, two inputs (BASE2)
UV Lens (LENS)

Mounting Plate (choose 1 per fixture):

5.5" x 5.5" - 4 mounting holes, 4" centers (plate 54)
6" x 6" - 4 mounting holes, 4.7" centers (plate 64)
7" x 7" - 4 mounting holes, 6" centers (plate 76)

5.5" x 5.5" - no holes/blank (plate 5B)
6" x 6" - no holes/blank (plate 6B)
7" x 7" - no holes/blank (plate 7B)

Specialty Lights: AC, Double Head (No Monitoring)

Fixture	Index No.	Model No.	Mounting Plate	Description	Replacement LED Module
SM	0601	RG2ACDN	XX	Red & Green 360°, 2 NM, AC, 2 inputs double head, no monitoring	RG2DN
SM	0701	YW2ACDN	XX	Yellow & White 360°, 2 NM, AC, 2 inputs double head, no monitoring	YW2DN
SM	0801	RW2ACDN	XX	Red & White 360°, 2 NM, AC, 2 inputs double head, no monitoring	RW2DN
SM	0901	GW2ACDN	XX	Green & White 360°, 2 NM, AC, 2 inputs double head, no monitoring	GW2DN

Replacement Parts:

Power Connector (AC2)
Base, two inputs (BASE2)
UV Lens (LENS)

Mounting Plate (choose 1 per fixture):

5.5" x 5.5" - 4 mounting holes, 4" centers (plate 54)
6" x 6" - 4 mounting holes, 4.7" centers (plate 64)
7" x 7" - 4 mounting holes, 6" centers (plate 76)

5.5" x 5.5" - no holes/blank (plate 5B)
6" x 6" - no holes/blank (plate 6B)
7" x 7" - no holes/blank (plate 7B)

Specialty Lights: DC, Double Head (No Monitoring)

Fixture	Index No.	Model No.	Mounting Plate	Description	Replacement LED Module
SM	1001	RG2DCDN	XX	Red & Green 360°, 2 NM, DC, 2 inputs double head, no monitoring	RG2DN
SM	1101	YW2DCDN	XX	Yellow & White 360°, 2 NM, DC, 2 inputs double head, no monitoring	YW2DN
SM	1201	RW2DCDN	XX	Red & White 360°, 2 NM, DC, 2 inputs double head, no monitoring	RW2DN
SM	1301	GW2DCDN	XX	Green & White 360°, 2 NM, DC, 2 inputs double head, no monitoring	GW2DN

Replacement Parts:

Power Connector (DC2)
Base, two inputs (BASE2)
UV Lens (LENS)

Mounting Plate (choose 1 per fixture):

5.5" x 5.5" - 4 mounting holes, 4" centers (plate 54)
6" x 6" - 4 mounting holes, 4.7" centers (plate 64)
7" x 7" - 4 mounting holes, 6" centers (plate 76)

5.5" x 5.5" - no holes/blank (plate 5B)
6" x 6" - no holes/blank (plate 6B)
7" x 7" - no holes/blank (plate 7B)

Please see specification sheet for allowable combinations and additional product information.



Navigation Light - Vessel Less than 50 m (165 ft)

Monitoring: *Notifies alarm panel when approaching end of life (50,000 hours) or when COLREG non-compliant*

Example: SM-1401-PT2ACSM-XX

AC, Single Head, Monitoring

Fixture	Index No.	Model No.	Mounting Plate	Description	Replacement LED Module
SM	1401	PT2ACSM	XX	Port 112.5° red, 2 NM, AC, 1 input single head, monitoring	PT2SM
SM	1402	SB2ACSM	XX	Starboard 112.5° green, 2 NM, AC, 1 input single head, monitoring	SB2SM
SM	1403	ST2ACSM	XX	Stern 135° white, 2 NM, AC, 1 input single head, monitoring	ST2SM
SM	1404	MH5ACSM	XX	Masthead 225° white, 5 NM, > 20 meters < 50 meters, AC, 1 input single head, monitoring	MH5SM
SM	1405	AW2ACSM	XX	All Round 360° white, 2 NM, < 50 meters, AC, 1 input single head, monitoring	AW2SM
SM	1406	AW5ACSM	XX	All Round 360° white, 5 NM, Maneuvering, AC, 1 input single head, monitoring	AW5SM
SM	1407	AG2ACSM	XX	All Round 360° green 2 NM, < 50 meters AC, 1 input single head, monitoring	AG2SM
SM	1408	AR2ACSM	XX	All Round 360° red 2 NM, < 50 meters AC, 1 input single head, monitoring	AR2SM
SM	1409	AY2ACSM	XX	All Round 360° yellow 2 NM, < 50 meters, AC, 1 input single head, monitoring	AY2SM
SM	1410	TW2ACSM	XX	Tow 135° yellow, 2 NM, AC, 1 input single head, monitoring	TW2SM
SM	1411	HV2ACSM	XX	Hovercraft 120fpm 360° yellow, 2 NM, AC, 1 input single head, monitoring	HV2SM
SM	1412	SP2ACSM	XX	Special Flash 60fpm 225° yellow, 2 NM, AC, 1 input single head, monitoring	SP2SM

Replacement Parts:

Power Connector (AC1)
Base, one input (BASE1)
UV Lens (LENS)

Mounting Plate (choose 1 per fixture):

5.5" x 5.5" - 4 mounting holes, 4" centers (plate 54) 5.5" x 5.5" - no holes/blank (plate 5B)
6" x 6" - 4 mounting holes, 4.7" centers (plate 64) 6" x 6" - no holes/blank (plate 6B)
7" x 7" - 4 mounting holes, 6" centers (plate 76) 7" x 7" - no holes/blank (plate 7B)

DC, Single Head, Monitoring

Fixture	Index No.	Model No.	Mounting Plate	Description	Replacement LED Module
SM	1501	PT2DCSM	XX	Port 112.5° red, 2 NM, DC, 1 input single head, monitoring	PT2SM
SM	1502	SB2DCSM	XX	Starboard 112.5° green, 2 NM, DC, 1 input single head, monitoring	SB2SM
SM	1503	ST2DCSM	XX	Stern 135° white, 2 NM, DC, 1 input single head, monitoring	ST2SM
SM	1504	MH5DCSM	XX	Masthead 225° white, 5 NM, > 20 meters < 50 meters, DC, 1 input single head, monitoring	MH5SM
SM	1505	AW2DCSM	XX	All Round 360° white, 2 NM, < 50 meters, DC, 1 input single head, monitoring	AW2SM
SM	1506	AW5DCSM	XX	All Round 360° white, 5 NM, Maneuvering, DC, 1 input single head, monitoring	AW5SM
SM	1507	AG2DCSM	XX	All Round 360° green 2 NM, < 50 meters DC, 1 input single head, monitoring	AG2SM
SM	1508	AR2DCSM	XX	All Round 360° red 2 NM, < 50 meters DC, 1 input single head, monitoring	AR2SM
SM	1509	AY2DCSM	XX	All Round 360° yellow 2 NM, < 50 meters, DC, 1 input single head, monitoring	AY2SM
SM	1510	TW2DCSM	XX	Tow 135° yellow, 2 NM, DC, 1 input single head, monitoring	TW2SM
SM	1511	HV2DCSM	XX	Hovercraft 120fpm 360° yellow, 2 NM, DC, 1 input single head, monitoring	HV2SM
SM	1512	SP2DCSM	XX	Special Flash 60fpm 225° yellow, 2 NM, DC, 1 input single head, monitoring	SP2SM

Replacement Parts:

Power Connector (DC1)
Base, one input (BASE1)
UV Lens (LENS)

Mounting Plate (choose 1 per fixture):

5.5" x 5.5" - 4 mounting holes, 4" centers (plate 54) 5.5" x 5.5" - no holes/blank (plate 5B)
6" x 6" - 4 mounting holes, 4.7" centers (plate 64) 6" x 6" - no holes/blank (plate 6B)
7" x 7" - 4 mounting holes, 6" centers (plate 76) 7" x 7" - no holes/blank (plate 7B)

Navigation Light - Vessel Less than 50 m (165 ft)

Monitoring: Notifies alarm panel when approaching end of life (50,000 hours) or when COLREG non-compliant

Example: SM-1601-PT2ACDM-XX

AC, Double Head, Monitoring

Fixture	Index No.	Model No.	Mounting Plate	Description	Replacement LED Module
SM	1601	PT2ACDM	XX	Port 112.5° red, 2 NM, AC, 2 inputs double head, monitoring	PT2DM
SM	1602	SB2ACDM	XX	Starboard 112.5° green, 2 NM, AC, 2 inputs double head, monitoring	SB2DM
SM	1603	ST2ACDM	XX	Stern 135° white, 2 NM, AC, 2 inputs double head, monitoring	ST2DM
SM	1604	MH5ACDM	XX	Masthead 225° white, 5 NM, > 20 meters < 50 meters, AC, 2 inputs double head, monitoring	MH5DM
SM	1605	AW2ACDM	XX	All Round 360° white, 2 NM, < 50 meters, AC, 2 inputs double head, monitoring	AW2DM
SM	1606	AW5ACDM	XX	All Round 360° white, 5 NM, Maneuvering, AC, 2 inputs double head, monitoring	AW5DM
SM	1607	AG2ACDM	XX	All Round 360° green 2 NM, < 50 meters AC, 2 inputs double head, monitoring	AG2DM
SM	1608	AR2ACDM	XX	All Round 360° red 2 NM, < 50 meters AC, 2 inputs double head, monitoring	AR2DM
SM	1609	AY2ACDM	XX	All Round 360° yellow 2 NM, < 50 meters, AC, 2 inputs double head, monitoring	AY2DM
SM	1610	TW2ACDM	XX	Tow 135° yellow, 2 NM, AC, 2 inputs double head, monitoring	TW2DM
SM	1611	HV2ACDM	XX	Hovercraft 120fpm 360° yellow, 2 NM, AC, 2 inputs double head, monitoring	HV2DM
SM	1612	SP2ACDM	XX	Special Flash 60fpm 225° yellow, 2 NM, AC, 2 inputs double head, monitoring	SP2DM

Replacement Parts:

Power Connector (AC2)
Base, two inputs (BASE2)
UV Lens (LENS)

Mounting Plate (choose 1 per fixture):

5.5" x 5.5" - 4 mounting holes, 4" centers (plate 54)
6" x 6" - 4 mounting holes, 4.7" centers (plate 64)
7" x 7" - 4 mounting holes, 6" centers (plate 76)

5.5" x 5.5" - no holes/blank (plate 5B)
6" x 6" - no holes/blank (plate 6B)
7" x 7" - no holes/blank (plate 7B)

DC, Double Head, Monitoring

Fixture	Index No.	Model No.	Mounting Plate	Description	Replacement LED Module
SM	1701	PT2DCDM	XX	Port 112.5° red, 2 NM, DC, 2 inputs double head, monitoring	PT2DM
SM	1702	SB2DCDM	XX	Starboard 112.5° green, 2 NM, DC, 2 inputs double head, monitoring	SB2DM
SM	1703	ST2DCDM	XX	Stern 135° white, 2 NM, DC, 2 inputs double head, monitoring	ST2DM
SM	1704	MH5DCDM	XX	Masthead 225° white, 5 NM, > 20 meters < 50 meters, DC, 2 inputs double head, monitoring	MH5DM
SM	1705	AW2DCDM	XX	All Round 360° white, 2 NM, < 50 meters, DC, 2 inputs double head, monitoring	AW2DM
SM	1706	AW5DCDM	XX	All Round 360° white, 5 NM, Maneuvering, DC, 2 inputs double head, monitoring	AW5DM
SM	1707	AG2DCDM	XX	All Round 360° green 2 NM, < 50 meters DC, 2 inputs double head, monitoring	AG2DM
SM	1708	AR2DCDM	XX	All Round 360° red 2 NM, < 50 meters DC, 2 inputs double head, monitoring	AR2DM
SM	1709	AY2DCDM	XX	All Round 360° yellow 2 NM, < 50 meters, DC, 2 inputs double head, monitoring	AY2DM
SM	1710	TW2DCDM	XX	Tow 135° yellow, 2 NM, DC, 2 inputs double head, monitoring	TW2DM
SM	1711	HV2DCDM	XX	Hovercraft 120fpm 360° yellow, 2 NM, DC, 2 inputs double head, monitoring	HV2DM
SM	1712	SP2DCDM	XX	Special Flash 60fpm 225° yellow, 2 NM, DC, 2 inputs double head, monitoring	SP2DM

Replacement Parts:

Power Connector (DC2)
Base, two inputs (BASE2)
UV Lens (LENS)

Mounting Plate (choose 1 per fixture):

5.5" x 5.5" - 4 mounting holes, 4" centers (plate 54)
6" x 6" - 4 mounting holes, 4.7" centers (plate 64)
7" x 7" - 4 mounting holes, 6" centers (plate 76)

5.5" x 5.5" - no holes/blank (plate 5B)
6" x 6" - no holes/blank (plate 6B)
7" x 7" - no holes/blank (plate 7B)

Please see specification sheet for allowable combinations and additional product information.



Navigation Light - Vessel Less than 50 m (165 ft)

Monitoring: *Notifies alarm panel when approaching end of life (50,000 hours) or when COLREG non-compliant*

Example: SM-1801-PT2ACAM-XX

New: AC, 1 Input; A: Autonomous Double Head, Alternates, Automatic, Monitoring

Fixture	Index No.	Model No.	Mounting Plate	Description	Replacement LED Module
SM	1801	PT2ACAM	XX	Port 112.5° red, 2 NM, AC, 1 input Alter/Auto , monitoring	PT2AM
SM	1802	SB2ACAM	XX	Starboard 112.5° green, 2 NM, AC, 1 input Alter/Auto , monitoring	SB2AM
SM	1803	ST2ACAM	XX	Stern 135° white, 2 NM, AC, 1 input Alter/Auto , monitoring.	ST2AM
SM	1804	MH5ACAM	XX	Masthead 225° white, 5 NM, > 20 meters < 50 meters, AC, 1 input Alter/Auto , monitoring	MH5AM
SM	1805	AW2ACAM	XX	All Round 360° white, 2 NM, < 50 meters, AC, 1 input Alter/Auto , monitoring	AW2AM
SM	1806	AW5ACAM	XX	All Round 360° white, 5 NM, Maneuvering, AC, 1 input Alter/Auto , monitoring	AW5AM
SM	1807	AG2ACAM	XX	All Round 360° green 2 NM, < 50 meters AC, 1 input Alter/Auto , monitoring	AG2AM
SM	1808	AR2ACAM	XX	All Round 360° red 2 NM, < 50 meters AC, 1 input Alter/Auto , monitoring	AR2AM
SM	1809	AY2ACAM	XX	All Round 360° yellow 2 NM, < 50 meters, AC, 1 input Alter/Auto , monitoring	AY2AM
SM	1810	TW2ACAM	XX	Tow 135° yellow, 2 NM, AC, 1 input Alter/Auto , monitoring	TW2AM
SM	1811	HV2ACAM	XX	Hovercraft 120fpm 360° yellow, 2 NM, AC, 1 input Alter/Auto , monitoring	HV2AM
SM	1812	SP2ACAM	XX	Special Flash 60fpm 225° yellow, 2 NM, AC, 1 input Alter/Auto , monitoring	SP2AM

Replacement Parts:

Power Connector (AC1)
Base, one input (BASE1)
UV Lens (LENS)

Mounting Plate (choose 1 per fixture):

5.5" x 5.5" - 4 mounting holes, 4" centers (plate 54) 5.5" x 5.5" - no holes/blank (plate 5B)
6" x 6" - 4 mounting holes, 4.7" centers (plate 64) 6" x 6" - no holes/blank (plate 6B)
7" x 7" - 4 mounting holes, 6" centers (plate 76) 7" x 7" - no holes/blank (plate 7B)

New: DC, 1 Input; A: Autonomous Double Head, Alternates, Automatic, Monitoring

Fixture	Index No.	Model No.	Mounting Plate	Description	Replacement LED Module
SM	1901	PT2DCAM	XX	Port 112.5° red, 2 NM, DC, 1 input Alter/Auto , monitoring	PT2SM
SM	1902	SB2DCAM	XX	Starboard 112.5° green, 2 NM, DC, 1 input Alter/Auto , monitoring	SB2SM
SM	1903	ST2DCAM	XX	Stern 135° white, 2 NM, DC, 1 input Alter/Auto , monitoring.	ST2SM
SM	1904	MH5DCAM	XX	Masthead 225° white, 5 NM, > 20 meters < 50 meters, DC, 1 input Alter/Auto , monitoring	MH5SM
SM	1905	AW2DCAM	XX	All Round 360° white, 2 NM, < 50 meters, DC, 1 input Alter/Auto , monitoring	AW2SM
SM	1906	AW5DCAM	XX	All Round 360° white, 5 NM, Maneuvering, DC, 1 input Alter/Auto , monitoring	AW5SM
SM	1907	AG2DCAM	XX	All Round 360° green 2 NM, < 50 meters DC, 1 input Alter/Auto , monitoring	AG2SM
SM	1908	AR2DCAM	XX	All Round 360° red 2 NM, < 50 meters DC, 1 input Alter/Auto , monitoring	AR2SM
SM	1909	AY2DCAM	XX	All Round 360° yellow 2 NM, < 50 meters, DC, 1 input Alter/Auto , monitoring	AY2SM
SM	1910	TW2DCAM	XX	Tow 135° yellow, 2 NM, DC, 1 input Alter/Auto , monitoring	TW2SM
SM	1911	HV2DCAM	XX	Hovercraft 120fpm 360° yellow, 2 NM, DC, 1 input Alter/Auto , monitoring	HV2SM
SM	1912	SP2DCAM	XX	Special Flash 60fpm 225° yellow, 2 NM, DC, 1 input Alter/Auto , monitoring	SP2SM

Replacement Parts:

Power Connector (DC1)
Base, one input (BASE1)
UV Lens (LENS)

Mounting Plate (choose 1 per fixture):

5.5" x 5.5" - 4 mounting holes, 4" centers (plate 54) 5.5" x 5.5" - no holes/blank (plate 5B)
6" x 6" - 4 mounting holes, 4.7" centers (plate 64) 6" x 6" - no holes/blank (plate 6B)
7" x 7" - 4 mounting holes, 6" centers (plate 76) 7" x 7" - no holes/blank (plate 7B)

Navigation Light - Vessel Less than 50 m (165 ft)

Monitoring: Notifies alarm panel when approaching end of life (50,000 hours) or when COLREG non-compliant

Example: SM-2001-PT2ADDM-XX

AD: AC & DC, Double Head, Monitoring

Fixture	Index No.	Model No.	Mounting Plate	Description	Replacement LED Module
SM	2001	PT2ADDM	XX	Port 112.5° red, 2 NM, AD, 2 inputs double head, monitoring	PT2DM
SM	2002	SB2ADDM	XX	Starboard 112.5° green, 2 NM, AD, 2 inputs double head, monitoring	SB2DM
SM	2003	ST2ADDM	XX	Stern 135° white, 2 NM, AD, 2 inputs double head, monitoring	ST2DM
SM	2004	MH5ADDM	XX	Masthead 225° white, 5 NM, > 20 meters < 50 meters, AD, 2 inputs double head, monitoring	MH5DM
SM	2005	AW2ADDM	XX	All Round 360° white, 2 NM, < 50 meters, AD, 2 inputs double head, monitoring	AW2DM
SM	2006	AW5ADDM	XX	All Round 360° white, 5 NM, Maneuvering, AD, 2 inputs double head, monitoring	AW5DM
SM	2007	AG2ADDM	XX	All Round 360° green 2 NM, < 50 meters AD, 2 inputs double head, monitoring	AG2DM
SM	2008	AR2ADDM	XX	All Round 360° red 2 NM, < 50 meters AD, 2 inputs double head, monitoring	AR2DM
SM	2009	AY2ADDM	XX	All Round 360° yellow 2 NM, < 50 meters, AD, 2 inputs double head, monitoring	AY2DM
SM	2010	TW2ADDM	XX	Tow 135° yellow, 2 NM, AD, 2 inputs double head, monitoring	TW2DM
SM	2011	HV2ADDM	XX	Hovercraft 120fpm 360° yellow, 2 NM, AD, 2 inputs double head, monitoring	HV2DM
SM	2012	SP2ADDM	XX	Special Flash 60fpm 225° yellow, 2 NM, AD, 2 inputs double head, monitoring	SP2DM

Replacement Parts:

Power Connector (AD2)
Base, two inputs (BASE2)
UV Lens (LENS)

Mounting Plate (choose 1 per fixture):

5.5" x 5.5" - 4 mounting holes, 4" centers (plate 54)
6" x 6" - 4 mounting holes, 4.7" centers (plate 64)
7" x 7" - 4 mounting holes, 6" centers (plate 76)

5.5" x 5.5" - no holes/blank (plate 5B)
6" x 6" - no holes/blank (plate 6B)
7" x 7" - no holes/blank (plate 7B)

