



1074 Kenran Industrial Blvd  
 Saint Louis, MO 63137  
 Phone: (800) 381-9968

# HUMCO Lights

## C&F 500W Manual Xenon Searchlight

### 500 Watt Manual Control Xenon Searchlight

**45 Million Candlepower with Remote Electric Beam-size**

#### Features



Standard of U.S. Coast Guard, U.S. Navy, and U.S. Prison System!

- **Beam Intensity:** 45 Million Beam Candlepower illuminates an object approximately 6700 meters away on a clear night!
- **Electric Beam-Size Focus:** Beam can be widened and narrowed remote electrically, throughout a continuous spectrum.
- **Beam-size Focus Knob:** External Knob changes beam-size with no tools, and provides back-up should the focus motor fail.
- **Beyond 360° of Rotation...** Unique Sliding-Stop Design allows 385 Degrees horizontal motion.
- **“Multi-board Safety Back-up”...** electronic design incorporates two boards in parallel, and if one fails, the beam will still operate in back-up mode!
- **Bullet-Resistant Reflector...** Precision-Optic Reflector with virtually indestructible Nickel Material helps prevent breakage if fixture is impacted by bullets or rocks.
- **Robust Lever-Gear Aiming Assembly...** twist the lever handle and a rack and pinion design moves head up and down with a built-in friction brake. Swing Lever side to side for horizontal aiming.
- **Thermal Camera (optional):** Optional integrated thermal camera provides additional Night Vision Capability.
- **LED Hybrid (optional):** Auxiliary LED Light Modules project a “Wall of Light”, 150 Meters Wide and over 230 Meters away, for strategic wide area, short-range lighting.

#### Searchlight Specifications

**Electric Beam-Size Focus:** 1 to 20° (throughout continuous spectrum)  
**Temperature Range:** -25 °C to +48 °C (approx)  
**Environmental Protection:** IP56  
**Power Consumption:** 115VAC/12 Amps or 230 VAC/6 Amps; 50/60HZ  
**Vertical Span:** +35 Deg to -35 Deg (Total 70 Deg approx)  
**Horizontal Span:** Beyond Full Circle (385 Degrees with sliding stop)  
**Lamp:** 500 Watt, Xenon Short Arc, 6500 °Kelvin  
**Beam Intensity:** 45 Million Candela  
**Distance Serviced measuring 1 LUX:** 6708 Meters on a clear night  
**Reflector:** Precision Electroformed, Nickel Material, Bullet-Resistant  
**Materials:** Marine Grade Aluminum and Stainless Steel



**“Leaders in Searchlight Technology for over 122 years”**

# Electronic Power Supply with Multi-Board Safety Back-up!

*GO GREEN* with the New C&F 500 Watt Xenon Power Supply... "Less than 1/3 the weight, Less than 1/3 the size, and 15% more efficient than previous models."

## Features

- ⊙ Light Weight
- ⊙ Small Footprint
- ⊙ Improved Efficiency
- ⊙ \*Multi-Board Safety Back-up Design
- ⊙ 120 & 230 Volt Models Available
- ⊙ Integrated Hour Meter and Ammeter
- ⊙ Optional Outdoor Models Available
- ⊙ Backward compatible with previous generation power supplies



**Qty(2) Electronic Boards in parallel provide immediate Safety Back-up!**

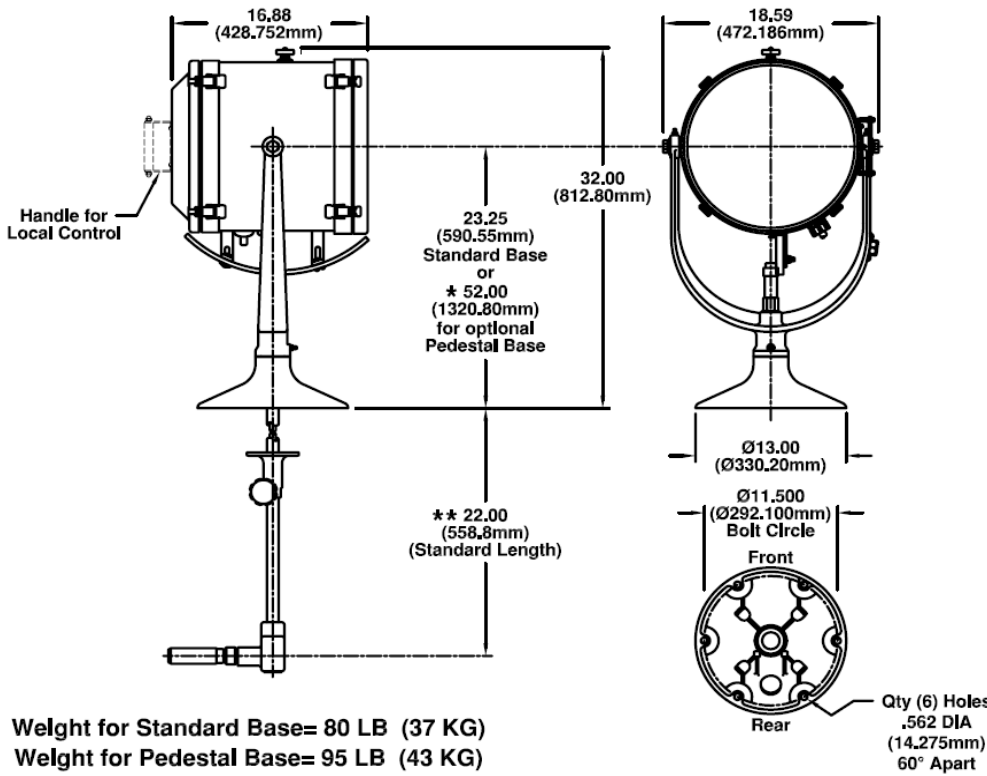
\*Multi-Board Safety Back-up Design: The unique Carlisle & Finch design has multiple electronic boards connected in parallel which provide built-in redundancy. If a board fails, the searchlight will still operate in "back-up" mode. This feature insures greater searchlight reliability, and is offered by no other searchlight company in the world. Other searchlights, have a complete outage, if an electronic board fails!



*"Leaders in Searchlight Technology for over 122 Years"*



## 500 Watt Xenon Searchlights Models X9396LG-RF and X9396LG-HRF Dimensions in Inches (mm)



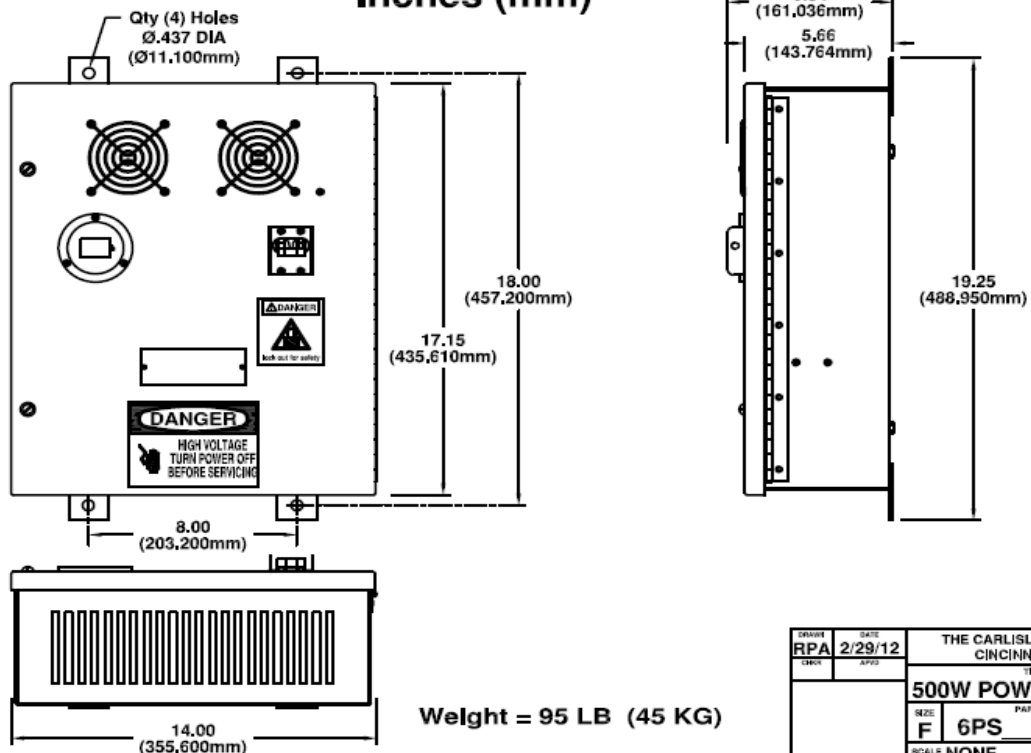
\* NOTE: This height can be made to any length as specified by customer. Consult factory for custom dimension.

\*\* NOTE: This control length can be any length as specified by customer. Consult factory for custom dimension.

DESIGN	DATE	THE CARLISLE & FINCH CO. CINCINNATI, OHIO	
RPA	9/18/06	TITLE	
CHKD	APVD	<b>500W SEARCHLIGHT</b>	
		SIZE	PART NO. REV
		F	X9396LG- (DIM) .
		SCALE	SHEET 1 OF 1
		NONE	



## 500 Watt Xenon Power Supply Dimensions Inches (mm)

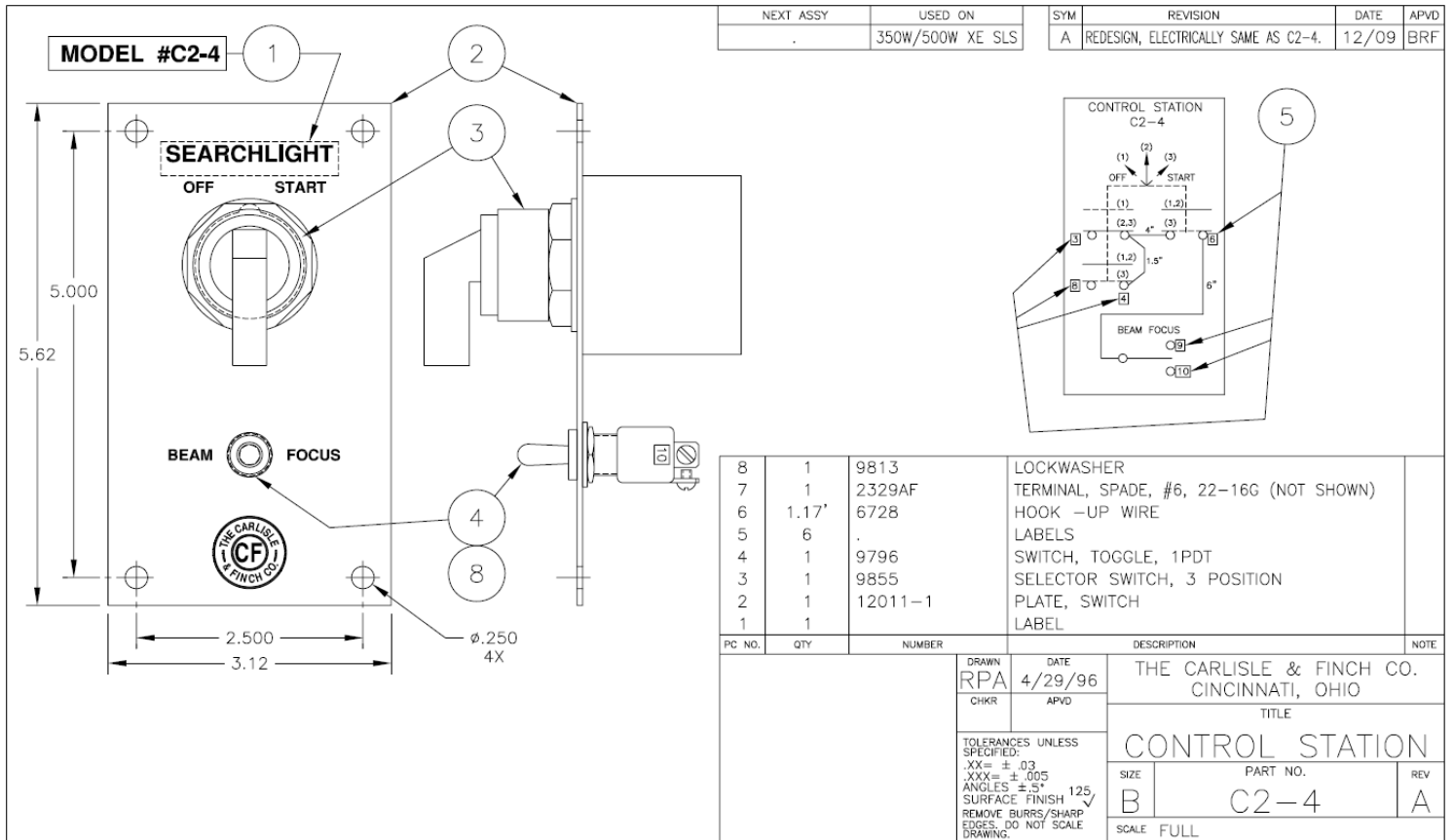


DESIGN	DATE	THE CARLISLE & FINCH CO. CINCINNATI, OHIO	
RPA	2/29/12	TITLE	
CHKD	APVD	<b>500W POWER SUPPLY</b>	
		SIZE	PART NO. REV
		F	6PS (DIM) .
		SCALE	SHEET 1 OF 1
		NONE	



*"Leaders in Searchlight Technology for over 122 Years"*

# Control Station Dimensions in Inches



## How to Specify a Searchlight System

Searchlight Model	Power Supply Model	Control Station Model
X9396LG-RF	6PS115 (115 VAC)  or 6PS230 (230 VAC)	C2-4

How to Specify a System: Read across the table and select one Searchlight, one Power Supply and one 9754X-RF Control Station. NOTE: Then specify Lever Control Length (reference previous page 3, and see the dimension \*\*22 inches marked by the double asterisk. This is the standard length, but this dimension can be specified to any length which meets the customer's exact requirement. Please consult Factory for the custom length you desire.

Example Order: Searchlight powered from 115VAC Input... Qty(1) X9396LG-RF, Qty(1) 6PS115, Qty(1) C2-4.

Note: To add an Optional Thermal Camera and/or LED Hybrid Feature, Consult Factory.